

## Cheryl Stippich Stained Glass Designs

### ARTIST STATEMENT:

Cheryl took a stained glass class in 1990 and has been creating original works ever since. Primarily working in the copper foil method, aka Tiffany Style, her work ranges from traditional to modern. She also incorporates items such as geode slices, mineral specimens and antique glass jewels which are not typically found in stained glass. Hammered brass or copper wire and decorative soldering are used to add texture and three dimensionality to her artwork.

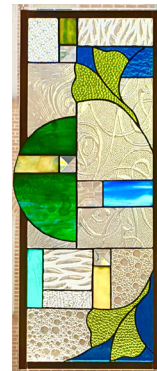
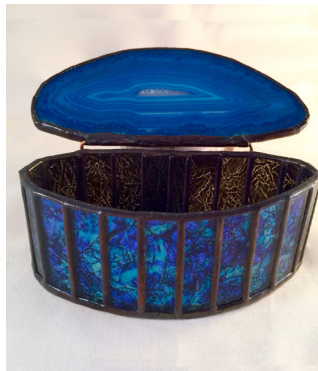
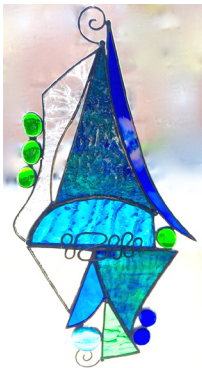
### ARTIST CATEGORY:

Glass

### LOCATION:

Hendersonville, NC

USA



### For More Information or to Order:

Wooden Stone Gallery  
704.892.1449  
inspire@woodenstonegallery.com  
445 South Main Street, Suite 200, Davidson, NC 28036

